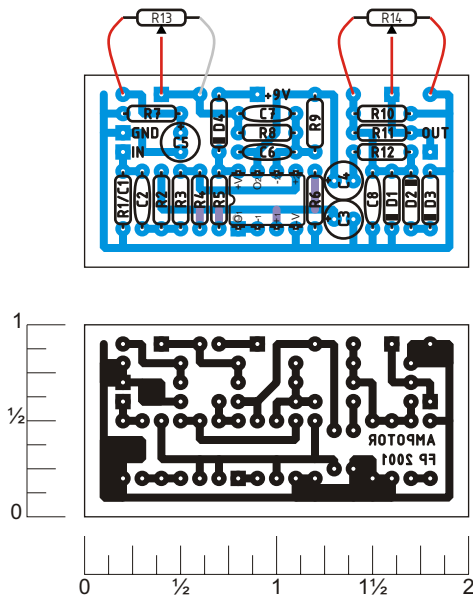


This board can be populated to become any of three circuits: MXR MicroAmp, MXR Distortion+ or DOD Overdrive 250. It also provides support for asymmetrical clipping. Off board components except for the potentiometers are not shown on the layout. Trademarks are property of their owners.



## MICROAMP PARTS LIST

### Resistors

R1 - 22M  
R2 - 10M  
R3 - 1k  
R4 - nothing  
R5 - 100k  
R6 - 100k  
R7 - nothing  
R8 - 2k7  
R9 - 56k  
R10 - 10k  
R11 - jumper  
R12 - 470

### Potentiometers

R13 - 500k  
R14 - nothing

### Capacitors

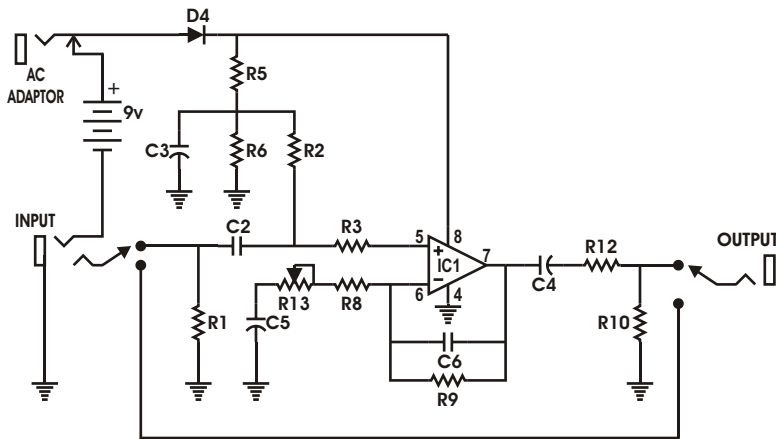
C1 - nothing  
C2 - 0.01  $\mu$ F  
C3 - 1 $\mu$ F  
C4 - 1.5 $\mu$ F  
C5 - 4.7 $\mu$ F  
C6 - 50pF  
C7 - nothing  
C8 - nothing

### Diodes

D1 - nothing  
D2 - nothing  
D3 - nothing  
D4 - 1N270

### ICs

IC1 - 4558



## DISTORTION + PARTS LIST

### Resistors

R1 - nothing  
R2 - nothing  
R3 - 10k  
R4 - 1M  
R5 - 1M  
R6 - 1M  
R7 - 4k7  
R8 - nothing  
R9 - 1M  
R10 - nothing  
R11 - nothing  
R12 - 10k

### Potentiometers

R13 - 1M  
R14 - 10k

### Capacitors

C1 - 0.001  $\mu$ F  
C2 - 0.01  $\mu$ F  
C3 - 1  $\mu$ F  
C4 - 1  $\mu$ F  
C5 - nothing  
C6 - 10 pF  
C7 - 0.047  $\mu$ F  
C8 - 0.001

### Diodes

D1 - 1N914  
D2 - 1N914  
D3 - jumper  
D4 - jumper

### ICs

IC1 - 4558

